

## ***Tracking in Eastern South Africa***

**With Dr. Kersey Lawrence, Phil Bennett and Lee Gutteridge**

This is a custom-tailored tracking expedition to the sub-tropical, game rich part of eastern South Africa, where lion and elephant and multitudes of other wildlife species still roam. This is a diverse wildlife experience, in multiple areas and habitats, and comprised of both on-foot and open-safari-viewing-vehicle experiences.

**Cost - \$3500 per person (on a sharing basis)**



### **Day 1 (9 March 2023)**

We land in South Africa, in the major city of Johannesburg today, and will all be collected from our flights to O. R. Tambo Airport and transferred to a small, local lodge, a mere ten

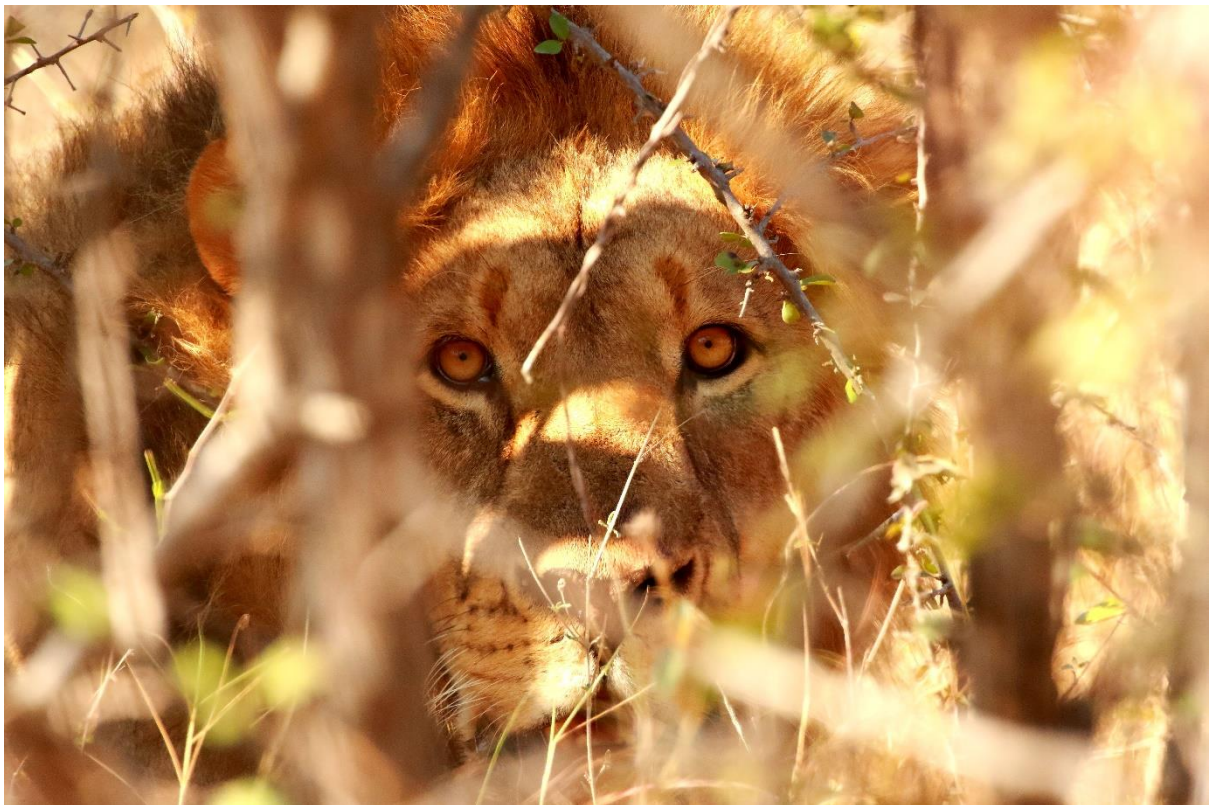
minutes away (traffic dependent). The facilities are excellent, as is the food, and the lodge gives an impression of being a beautiful oasis, secluded from the hustle and bustle of the surrounding city.

Phil Bennett will be joining you here, and will host and guide your experience over the coming few days, with his 16 yrs of safari experience, you will be in great hands, and well looked after in terms of your needs and planning.

Our participants will arrive on various flights through out the day, so we will spend tonight here, have a lovely traditional dinner, and then a restful evening to help us overcome the inevitable jetlag.

## **Day 2 (10 March 2023)**

The next morning, we will transfer across the central highveld plateau of the country, in a comfortable mini bus, and head down over the precipitous escarpment of the Drakensberg Mountains into the lower, warmer eastern reaches of the land.



We will stop for a lunch break on the way, for a light meal (at the participants own cost), in an interesting roadside complex, where, believe it or not, there are groups of rhinoceros, buffalo and antelope species kept in a free-roaming area as a part of a game farmer's personal collection. This captive situation will provide an interesting counter point to our future activities. There are four or five different food options here, ranging from a hot dog, to a Portuguese style peri-peri chicken, right through to a steak. We won't spent too long here, maybe 30 or 40 minutes before we get on the road.



Sometime after midday we will arrive at our guest lodge in the famous Kruger National Park ecosystem. We prefer to use the more luxurious private reserves, due to comfort, and of course the ability to be more flexible in our activities.

These first experiences will be mainly focussed on finding wildlife from the safety of an open vehicle. The wild animals in these areas are quite habituated to the presence of vehicles, and we can sometimes get really close. This will be a chance for our participating trackers to see the behaviours, the forms of locomotion, or gaits, and potentially the resultant foot print patterns of the animals we will be watching and tracking.



On the day of arrival here we will head out on our first afternoon drive, looking for species such as leopard, greater kudu, African buffalo, cheetah, plains zebra, the beautiful impala antelope, and many, many more species of large mammal.

The evening meal will be in the lodge, and is usually buffet style. The comfortable safari tents are well appointed, and have a view into the bush. Roaming spotted hyenas will probably be milling around in the dark, investigating the tents and pathways around you as you sleep, and the night's silence is often punctuated with the calls of these creatures, and many others.

### **Day 3 and 4 (11, 12 March 2023)**

These two full days will be hosted by Phil. As a group you will all be guided by the African safari guides and professionally employed trackers of the lodges we are visiting, and spend your time on a vehicle-based safari, looking for wildlife. Various mongooses, African civets and the different species of genets are some of the smaller carnivores you may see, as well as at least a dozen different antelope. African elephants, and incredible birdlife will all add

to your experience as you travel the land in the mornings and afternoons. There will also be opportunities to stop and get off the vehicle, to look at spoor and other natural signs of the creatures you have seen, but only once the animals move away and it is safe to do so.



Meals typically include an early breakfast of coffee and cookies to tide you over, followed by a huge breakfast when you get back from safari. Then, just after midday is lunch. You can also take some time to get a bit of rest to recover from the early mornings. Discussions with Phil on tracks and signs may also be an option for the midday. The evening meals are delicious, and filling. We often say when you come to Africa, you just eat, sleep and safari! Around the fire, Phil will share tales of Africa, to the sound of the hyenas giggling nearby.

### **Day 5 to 11 (13 to 19 March 2023)**

Today, after a final drive in this region, we will load up our luggage, and travel a couple of hours to our next venue, where the serious, more in-depth, tracking focus will start. We will transfer to a more rustic camp, still with all the comforts we need, but more in keeping with the nature of tracking, and more flexible in terms of our need to walk and explore the land intimately on foot.

This is going to be a deep immersion into the ecology of Africa, and we will strive to connect you to the ancient land from which our ancestors emerged and developed into the 'Us' of today.

Dr. Kersey Lawrence and Lee Gutteridge, both Senior Tracker and Evaluators on the CyberTracker Tracker Evaluation System will be waiting to share their experience with you for the remainder of the trip. CyberTracker is the international "gold-standard" for certifying wildlife trackers.

Phil Bennett has been a nature guide, leading walking trails, training guides and managing lodges in wilderness areas of Southern and East Africa since 2006. The knowledge and experience he brings will compliment the already amazing insights you shall gain from Kersey and Lee



During each day we will track from dawn, searching for wildlife on foot and by vehicle, explore the deeply wild areas around us, enjoy discussions during the day about various tracking related subjects, learn about the protohominids of Africa and much, much more. This is a tracking experience where you will receive the experience of Lee and Kersey, with a combined fifty years or more of dirt-time, and not to forgets Phil's extensive experience in South Africa, Tanzania, and other parts of Africa too.



Lee is also a FGASA (Field Guides Association of Southern Africa) Scout guide, the culmination of many years of bush-time, with a very unique set of insights, and nine publications on wildlife tracking and other aspects of natural history to date. Kersey's doctorate research was built around the study of wildlife tracking and trackers, and this, combined with her tracking qualification as the only female Senior Tracker in the world to date, make them a dynamic and high-powered tracker couple.

On the last full day in the camp, we will undertake a full day, CyberTracker Track and Sign evaluation, with the opportunity to become certified in Africa in this amazing art and science.

That evening we will award Track and Sign certificates to those who achieved a minimum score of 70%, or higher, and enjoy a special final dinner together in the African bush.



On our final morning together on the main program, we will enjoy an activity before packing and transferring to a small but comfortable lodge in Hoedspruit, the nearest town, to have a relaxed afternoon. The lodge is also in a wildlife area, with no dangerous game (most of the time, although occasionally leopard and spotted hyena are seen) where you can walk freely on your own, enjoy the fresh air and see plains game species such as warthogs or giraffe as you stroll. This is a good time to begin to assimilate your experience over the past weeks. You will be amazed at the things you have seen and that you have learned!

### **Day 12 (20 March 2023)**

Today, you will be transferred either to the Hoedspruit Airport for flights to Johannesburg, or to a transfer company pick-up point in the town (these final departure transportations to Johannesburg and then on to your home are at your own cost but we can advise you and also assist you with bookings).



## INFORMATION, TERMS & CONDITIONS

**This page must be signed and returned to Original Wisdom by each participant (or parent/legal guardian if under 18 years old) if you are accepted into the program and wish to attend. Electronic signatures are recognized as valid and legal substitutes for hand-written ink signatures, if you choose to sign this contract electronically.**

Please note that your participation in this program acknowledges explicit release (by yourself and by your parents or legal guardians) of Original Wisdom and Nature Guide Training employees, contractors, and volunteers from any and all liability, including from risks associated with Coronavirus, and any other unforeseen circumstances, including in travel to and from this program, and in all venues and activities during the program, including staying at venues and participating in activities in areas with dangerous animals.

In the event of a cancellation due to a pandemic related event or other international “act-of-nature” beyond control, this program will be postponed, and it is likely to include changes, including increased costs. We strongly recommend that you insure your travel.

There are no refunds for this program. If you sign up and need to cancel, we will work with you to try and fill your spot, which would enable you to receive a refund (minus a \$250 admin fee per person).

We reserve the right to alter this program, including its venues, activities, and staff, in the event of a personal health or family emergency for the advertised guides and/or hosts. Any substitutions will be of equal or better value.

It is likely that you will be in photos and videos taken during this program. We often create groups for each program on platforms such as WhatsApp to communicate with each other and to share photos and videos. These could be used in social media, marketing, and educational curriculum by us. Your attendance in this program indicates your agreement with this.

For a suggested packing list, go here:

<http://www.originalwisdom.com/what-to-bring-to-ngala-camp/>

For answers to frequently asked questions, please visit:

<http://www.originalwisdom.com/faqs-frequently-asked-questions/>

Read our full cancellation policy, here:

<http://www.originalwisdom.com/our-policies/>

Please note that the transfer of funds from your bank to ours indicates that you have read and agree to our cancellation policies, and our terms & conditions, even without your signature.

**I have read the Information, Terms & Conditions for this program and agree to them with my signature, below.**

**Printed Name** \_\_\_\_\_

**Signature** \_\_\_\_\_

**Date** \_\_\_\_\_

Please do not book your travel before confirming with us that this program is full and running.